

The Strength of Faith...

**BOND**X  
CHEMICO INDUSTRIES

BONDING

**BRILLIANCE**



# About Us

At **Bond X Chemico Industries**, we are dedicated to delivering innovative and reliable solutions for the construction and tiling industry. Specializing in advanced adhesives, grouts, fillers, and spacers, our products are designed to meet the diverse needs of modern construction projects with unmatched quality and performance.

Whether it's residential, commercial, or industrial projects, **Bond X Chemico Industries** stands as a trusted partner, delivering tailored solutions that empower builders, contractors, and architects to achieve superior results. Together, we build the future.



**Bond X** is a trusted name in construction materials, known for superior strength, durability, and performance. With advanced formulations and strict quality control, we deliver reliable, high-quality products. Customers choose Bond X for innovation, timely delivery, and exceptional support, making us the preferred choice for all types of projects.

“

# BondX

# Built on Trust

Delivering high-quality, innovative construction materials that enhance durability, performance, and trust in every project, with a focus on sustainability and customer satisfaction.

”



# Tile Fixing Adhesive for Internal Floor Application



Excellent bond strength | Easy to spread | No shrinkage | Nil Wastage

# SILVER

Grey

For Fixing tiles on Floor &  
Ceramic tiles on wall

## PRODUCT DETAILS

Silver high polymer modified cement based tile adhesive, Suitable for fixing small wall and floor tiles in internal situation, New Flooring, Tile on tile, Ceramic tiles featuring 12x18, 12x24 Interior & Exterior. Application in difficult and demanding situations consult BONDx regarding use of a higher performance adhesive.

## SHELF LIFE & STORAGE

Shelf life is 12 months from the date of manufacturing in unopened condition. Store in a cool & dry place.

## COVERAGE

This will depend on the nature and lateness of the surface and the method of application but at 3mm thickness it is approx. 40-50 sq. ft. per 20kg bag when using a thin-bed trowel. For good coverage, it is important that all surfaces should be clean, smooth, plumb, level and free from defects & undulations.

## PRODUCT FEATURES

1. Type 1
2. Suitable for internal floor use
3. Ready to mix
4. High strength
5. Polymer modified adhesive



# Tile Fixing Adhesive for Internal Wall & Floor Application



Excellent bond strength | Easy to spread | No shrinkage | Nil Wastage

# GOLD

Grey & White

For Fixing Ceramic & Vitrified(600x600 & 600x1200) on wall, tile & all type of floor application

## PRODUCT DETAILS

Gold high polymer modified cement based tile adhesive, Suitable for fixing wall tile, floor tile, vitrified tiles, porcelain tiles 600x600,800x800, 600x1200 and also tile on tile in internal situation. Applications in difficult and demanding situation consult BOND-X regarding use of a higher performance adhesive

## SHELF LIFE & STORAGE

Shelf life is 12 months from the date of manufacturing in unopened condition. Store in a cool & dry place.

## COVERAGE

This will depend on the nature and lateness of the surface and the method of application but at 3mm thickness it is approx. 40-50 sq. ft. per 20kg bag when using a thin-bed trowel. For good coverage, it is important that all surfaces should be clean, smooth, plumb, level and free from defects & undulations.

## PRODUCT FEATURES

1. Type 2
2. Suitable for internal & external use
3. Ready to mix
4. Fixes tiles over files
5. High strength
6. Polymer modified adhesive



# Tile Fixing Adhesive for Internal & External Wall & Floor Application



Excellent bond strength | Easy to spread | No shrinkage | Nil Wastage



# DIAMOND

Grey & White

For Fixing big Vitrified, Marbles, Granites on wall & floor, also exterior application

## PRODUCT DETAILS

Diamond high polymer modified cement based tile adhesive. suitable for fixing wall tiles, floor tiles, vitrified tiles, porcelain files, All Vitrified Slab Tiles & Big size files 800x1200, 800x1600, 1200x1800, applications in difficult and demanding situation consult BONDx regarding use of a higher performance adhesive

## SHELF LIFE & STORAGE

Shelf life is 12 months from the date of manufacturing in unopened condition. Store in a cool & dry place.

## COVERAGE

This will depend on the nature and lateness of the surface and the method of application but at 3mm thickness it is approx. 40-50 sq. ft. per 20kg bag when using a thin-bed trowel. For good coverage, it is important that all surfaces should be clean, smooth, plumb, level and free from defects & undulations.

## PRODUCT FEATURES

1. Type 3
2. Suitable for internal & external use
3. Ready to mix
4. Fixes files over files
5. High strength
6. Polymer modified adhesive



# Tile Fixing Adhesive for Internal & External Wall & Floor Application



Excellent bond strength | Easy to spread | No shrinkage | Nil Wastage

# PLATINUM

Grey & White

For Fixing big Vitrified, Marbles, Granites on wall & floor, also exterior application

## PRODUCT DETAILS

PLATINUM, A premium water & frost resistant, highly polymer modified cementitious wall and floor tile adhesive specially formulated for All slab vitrified tiles, fixing mosaic tiles ceramic, glass mosaic etc. it is also suitable for fixing ceramic, vitrified wall & floor tiles, metal or glass tiles, marble, granite, quartz stone, terrazzo and other natural stone in interior and exterior locations which includes use in swimming pools. This is ideal for fixing tile on tile.

## SHELF LIFE & STORAGE

Shelf life is 12 months from the date of manufacturing in unopened condition.

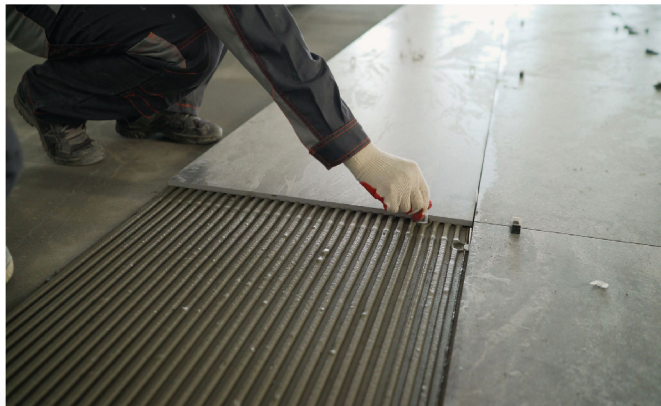
Store in a cool & dry place.

## COVERAGE

This will depend on the nature and lateness of the surface and the method of application but at 3mm thickness it is approx. 40-50 sq. ft. per 20kg bag when using a thin-bed trowel. For good coverage, it is important that all surfaces should be clean, smooth, plumb, level and free from defects & undulations.

## PRODUCT FEATURES

1. Type 4
2. Suitable for internal & external use
3. Ready to mix
4. Fixes tiles over tiles
5. Excellent water and frost resistance
6. Suitable for swimming pool
7. Recommended for quartz stone, quartz marble, granite & low porosity files etc
8. High strength
9. Polymer modified adhesive



The Strength of Faith...  
**BOND X**  
CHEMICO INDUSTRIES

- ◆ Polymer Based
- ◆ Water Resistant
- ◆ Crack Resistant
- ◆ Ready To Use
- ◆ For Tile Joint 1-3 mm



**TILE**  
**GROUT** | POLYMER  
MODIFIED  
GROUT

**1 kg.**  
NET WEIGHT



Confirms to

**CIT**

**EN 12004**

Classifications

IS 15477: 2019

CLASS TYPE 1

# TILE GROUT

One Pack Water Resistant Tile Grout

## PRODUCT DETAILS

Tiles Grout is a high quality fine, polymer modified, water-resistant, cement - based powder grout designed for grouting glaze wall tiles, mosaics, vitrified & fully vitrified tiles, floor tiles, industrial floor tiles, etc.

(Note: where chemical resistance is hygienic and sterile, it is important use Epoxy Grout)

## SHELF LIFE & STORAGE

Shelf life is 12 months from the date of manufacturing in unopened condition.

Store in a cool & dry place.

## COLORS



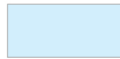
WHITE



IVORY



GREY



SKY BLUE



PINK



GREEN



RED



BLACK



BLUE



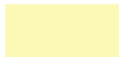
ORANGE



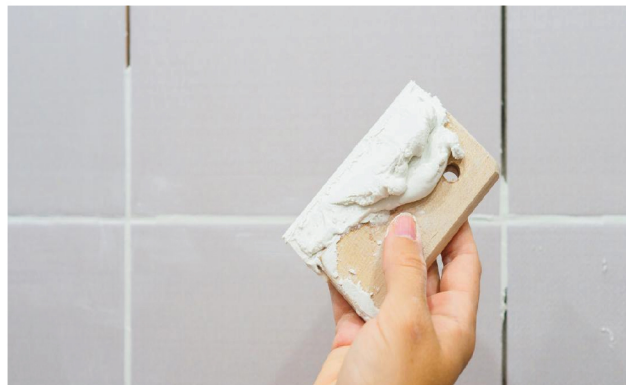
BROWN



JAISALMER



YELLOW





# EPOXY GROUT

Stain Free Grout For  
Floor & Wall (3 Part)

## PRODUCT DETAILS

Epoxy Grout is a three-part system, comprising of PART A, PART B and PART C for ease of application, The ability to fill tile / stone joints. The grout is best mixed to a smooth, creamy consistent paste. Epoxy resin based grout has a high degree of resistant to chemicals, abrasion and higher impact resistance. The cured grout-creates-tough, impermeable layer-resistant to food drops, bacteria, and dirt is easily maintained in a spiral condition.

## PRODUCT FEATURES

- Stain less and easy to clean, easy to mix and apply.
- Provides excellent chemical resistant property.
- Provides hygienic, hard wearing & impervious properties.
- Non-cracking or powdering.
- Non-Toxic & restricts entry of bacteria / dirt.

## SHELF LIFE & STORAGE

Shelf life is 12 months from the date of manufacturing in unopened condition.

Store in a cool & dry place.

## PACKAGING : 1kg & 5kg

is available in packages of 1 kg & 5 kg in pre-determined mixing proportion by weight

Components	1 kg Pack	5 kg Pack
Part A (Resin)	200 gm	1000 gm
Part B (Hardner)	100 gm	500 gm
Part C (Filler)	700 gm	3500 gm



# TILE ACCESSORIES

---



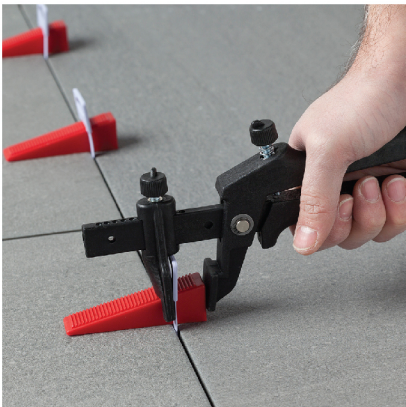
## TILE SPACER

Available Sizes

2 mm | 3 mm | 4 mm | 5 mm | 6 mm



## TROWEL



## TILE LEVELING KIT



# Bonding Strength, Building Trust



The Power To Stick Together



The Strength of Faith...

## **BOND X CHEMICO INDUSTRIES**

Survey No. 178/PI, B/h. Lords Hotel,  
Bela Rangpar, Morbi (Gujarat) - 363642

Call : +91 99244 38381

Call : +91 99244 38382

**E** : [bondx4460@gmail.com](mailto:bondx4460@gmail.com)

**W** : [www.bondx.in](http://www.bondx.in)

